

D-SUB Dual Port Right Angle Type

Specifications

Current Rate:3 AMP

Insulation Resistance:1000MΩ Min.

Contact Resistance:20mΩ Max.

Dielectric Voltage:500V AC for one minute

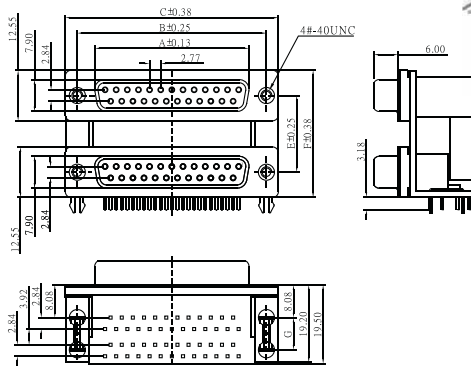
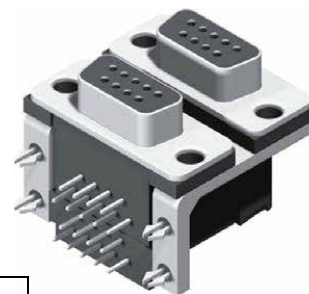
Operation Temperature:-55°C to +105°C

Material

Terminal:Copper Alloy.

©Insulator: PBT UL 94V-0 Rated.

No. of Contacts	Dim. A	Dim. B	Dim. C	Dim. E	Dim. F	Dim. G
9	16,33	24,99	30,81	15,88	28,40	7,00
15	24,66	33,32	39,14	19,05	31,60	
25	38,38	47,04	53,04	22,86	35,40	
37	54,84	63,54	69,32			8,00



Order Information

